

October 2025



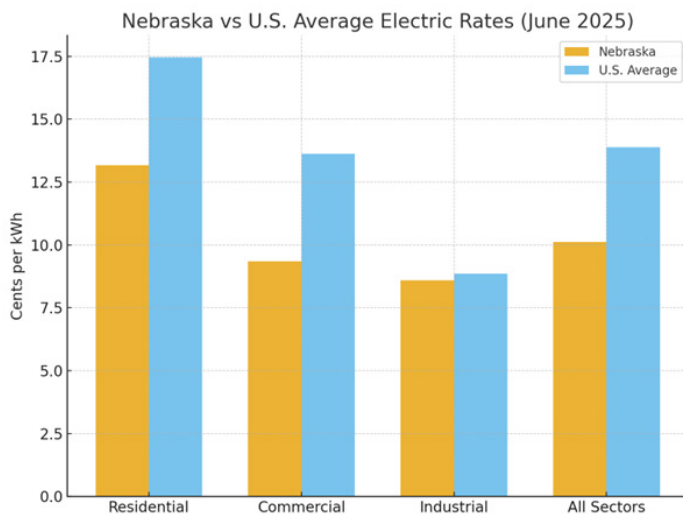
Public Power Month

Powering Affordability Together

BY: **KELLI CHAON**, Customer Engagement Manager

Last October, we shared in the Wheat Belt Connection how being a public power district means more than just delivering electricity — it means serving our friends and neighbors with reliability, safety, and accountability. This year, as we once again celebrate Public Power Month, we want to highlight another important advantage of public power: affordability.

Across the country, public power utilities consistently provide electric service at rates lower than investor-owned utilities. That's because our focus is not on profit, but on people. As a community-owned utility, Wheat Belt PPD reinvests revenues back into the system — improving reliability, enhancing service, and keeping costs as low as possible for our members.



Source: U.S. Energy Information Administration, Form EIA-861M (formerly EIA-826), Monthly Electric Power Industry Report.

Continued on 3-C



LUCKY DRAWING



Congratulations to Joe and Deb Aikens, our August “Lucky Draw Winner”!

Joe and Deb have three kids, four grandkids and six great grandkids. They have lived in a two mile radius south of Sidney for the past 25 years. Joe is retired from law enforcement after serving 42 years. Deb worked as an administrative in various businesses in Sidney.

In their spare time, they enjoy camping and fishing, and Joe especially loves deer hunting. Together, they share a passion for furniture flipping. With booths in both Sidney and Julesburg, they’re always on the lookout for that perfect piece to restore and give new life.

Carlson Farm and Ranch received a \$50 credit on their account for their prompt payment. If you would like to be included in our next drawing, and avoid a \$5 delinquent fee, please send your payment before the 16th of the month.



IN THIS ISSUE



Editor - Kelli Chaon

Public Power Month	Page 3-A/C
Wheat Belt PPD Employee Feature	Page 3-B
Wheat Belt Resumes Normal Business Hours	Page 3-B
August Board Meeting Update	Page 3-C
Strategic Plan Update	Page 3-C
Energy Scam & Efficiency Tips	Page 3-D

P.O. BOX 177, 11306 RD 32, SIDNEY, NE 69162

P 308.254.5871 | T 800.261.7114 | wheatbelt@wheatbelt.com | www.wheatbelt.com

Wheat Belt PPD Employee Feature

Chase Armstrong - Lead Lineman



How did you hear about Wheat Belt?

My teacher from college.

Why did you decide to go to work at Wheat Belt?

They offered me a job.

What do you like most about working at Wheat Belt?

The scenery I get to see.

Is there any special training or education needed for your job/career?

Lineman School.

Do you need to have continuing education for your type of work/career?

Yes, we attend trainings throughout the year.

Tell us about your family:

I have a current wife and a few hooligans that run around our house. (Wife: Emma, Daughter: Savii and Son: Riggs)

What do you like to do in your free time?

I enjoy honey do lists from my wife and in the little time after that I like to derby, hunt, fish and spend time with my family.

As a Wheat Belt Lineman, what does it mean to you to serve our customers and community during Public Power Month?

It's heart warming to keep the power on and customers happy!

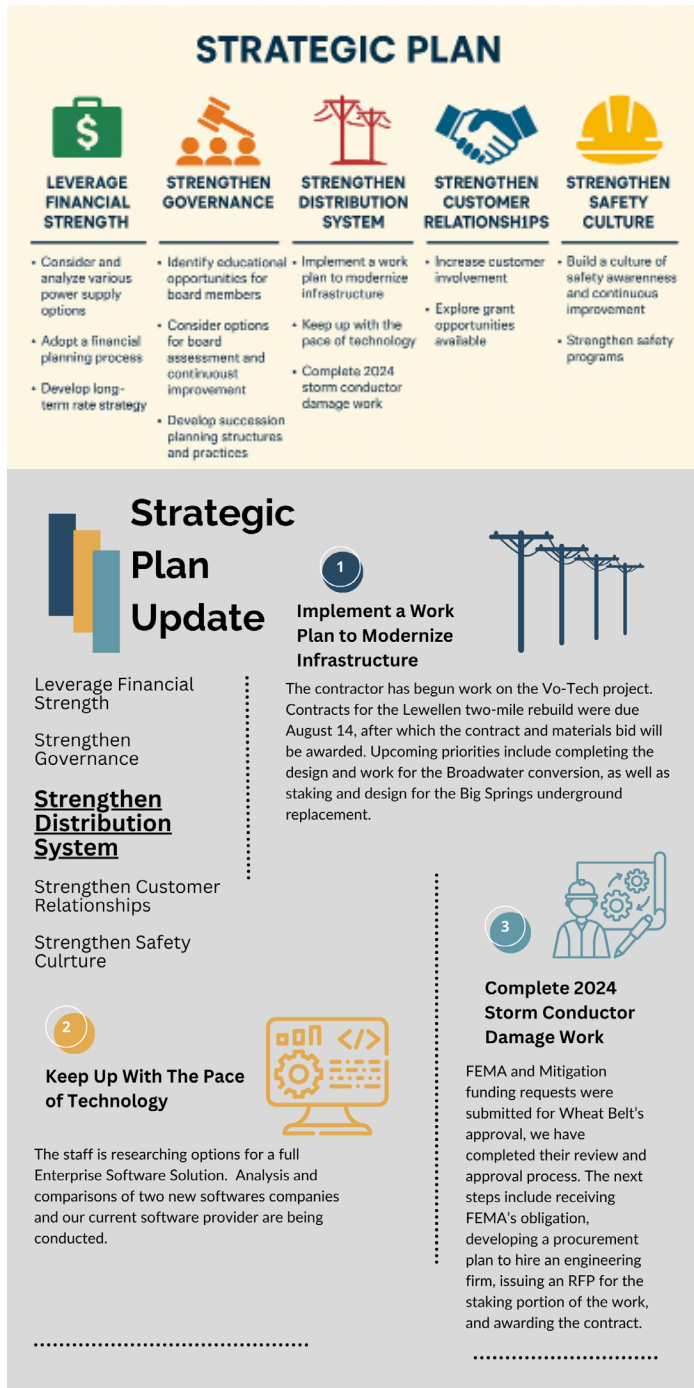


**Wheat Belt PPD
will resume our
normal office hours
effective
November 3, 2025.**

Our trial period for 10-hour days is ending. The data we collected from this trial, along with customer and employee feedback will be evaluated for any future changes to Wheat Belt's office hours.

Public Power Month cont'd from 3-A

Every dollar you pay stays right here, working to maintain infrastructure, respond to outages, and plan for future growth. This local, not-for-profit model ensures that affordability remains at the forefront of our mission. For example, in 2024, the average residential customer in Nebraska served by public power paid significantly less per kilowatt-hour compared to the national average. That translates into real savings for families, businesses, and farms in our service area.



Affordability is also about stability. Because we don't answer to shareholders, our board of directors, made up of local community members, makes decisions with your best interests in mind. That means steady, transparent rates and a long-term approach to keeping electricity reliable and cost-effective.

As we look ahead, Wheat Belt will continue working hard to balance today's needs with tomorrow's opportunities. Whether it's upgrading infrastructure, planning for renewable integration, or improving operational efficiency, our commitment remains the same: to provide electricity safely, reliably, and affordably to the people we serve.

AUGUST BOARD MEETING UPDATE

WHEAT BELT PUBLIC POWER DISTRICT

- The board reviewed and amended Policy: E-4, Standard Construction Practices.
- Bids were organized by our engineering firm, RVW, for the Lewellen Line Rebuild. The board voted to approve the contract with Great Plains Power of Grand Island.
- Weeda provided the board with an update on Wheat Belt's Work Plan for 2024-2027.
- Discussion was held on future rate increases that could be possible from our power suppliers.
- The board requested that Senator Strommen come to a meeting to discuss NEMA. Gulbranson will work with Senator Strommen's office to get this scheduled.
- A strategic plan initiative update was presented to the board regarding; Strengthen Distribution System. (See update on page 3-C

TIPS TO AVOID ENERGY SCAMS



Do you know the warning signs of an energy scam? Scammers will often use **high-pressure tactics** that create a sense of urgency. They may also ask for **unusual payment methods** such as gift cards or cryptocurrency. **Dodgy communication** is typically associated with a scam, including poor grammar, spelling errors or unusual email addresses. If you spot any of these warning signs, take a moment to pause and determine if it's legitimate or if it's a scam.

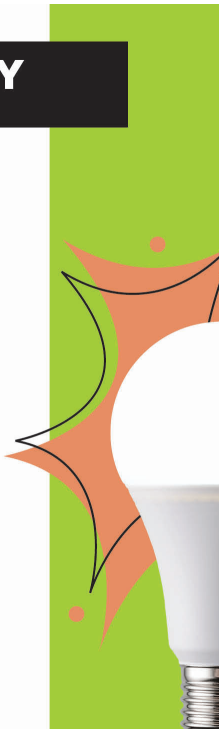


ENERGY EFFICIENCY TIP OF THE MONTH

As winter approaches, now is the time to inspect your home for air leaks around windows. Leaks reduce indoor comfort and lead to higher heating costs.

If you can see daylight around the edges of a window frame or if a window rattles slightly when touched, air is likely leaking.

Caulking and weatherstripping are simple, effective methods for sealing windows. These materials are available in a variety of compounds and forms, each designed for different types of surfaces. Choose the right product and apply it properly to reduce heat loss, improve comfort and lower energy bills.



BOARD OF DIRECTORS

PRESIDENT

Brian Zimmerman, *Big Springs*

VICE PRESIDENT

Stuart Morgan, *Dalton*

SECRETARY

Brian "Moe" Moffat, *Oshkosh*

TREASURER

Marcus Milanuk, *Oshkosh*

ASSISTANT SECRETARY

Toni Blomenkamp, *Broadwater*

DIRECTOR

Jennifer Eckhardt, *Dalton*

DIRECTOR

Collin Anderson, *Dalton*

MANAGERS

GENERAL MANAGER / CEO

Lacey Gulbranson

FINANCE & ADMINISTRATIVE SERVICES MANAGER

Tim Jones

OPERATIONS MANAGER

Rollie Waite

TECHNOLOGY & SYSTEMS DESIGN MANAGER

Jim Weeda

CUSTOMER ENGAGEMENT MANAGER

Kelli Chaon

OFFICE HOURS:

M-TH 6:30 a.m. to 4:30 p.m.

P 308.254.5871 | **T** 800.261.7114 | **F** 308.254.2384

wheatbelt@wheatbelt.com

Our Mission

**Deliver electricity safely, reliably and
efficiently.**